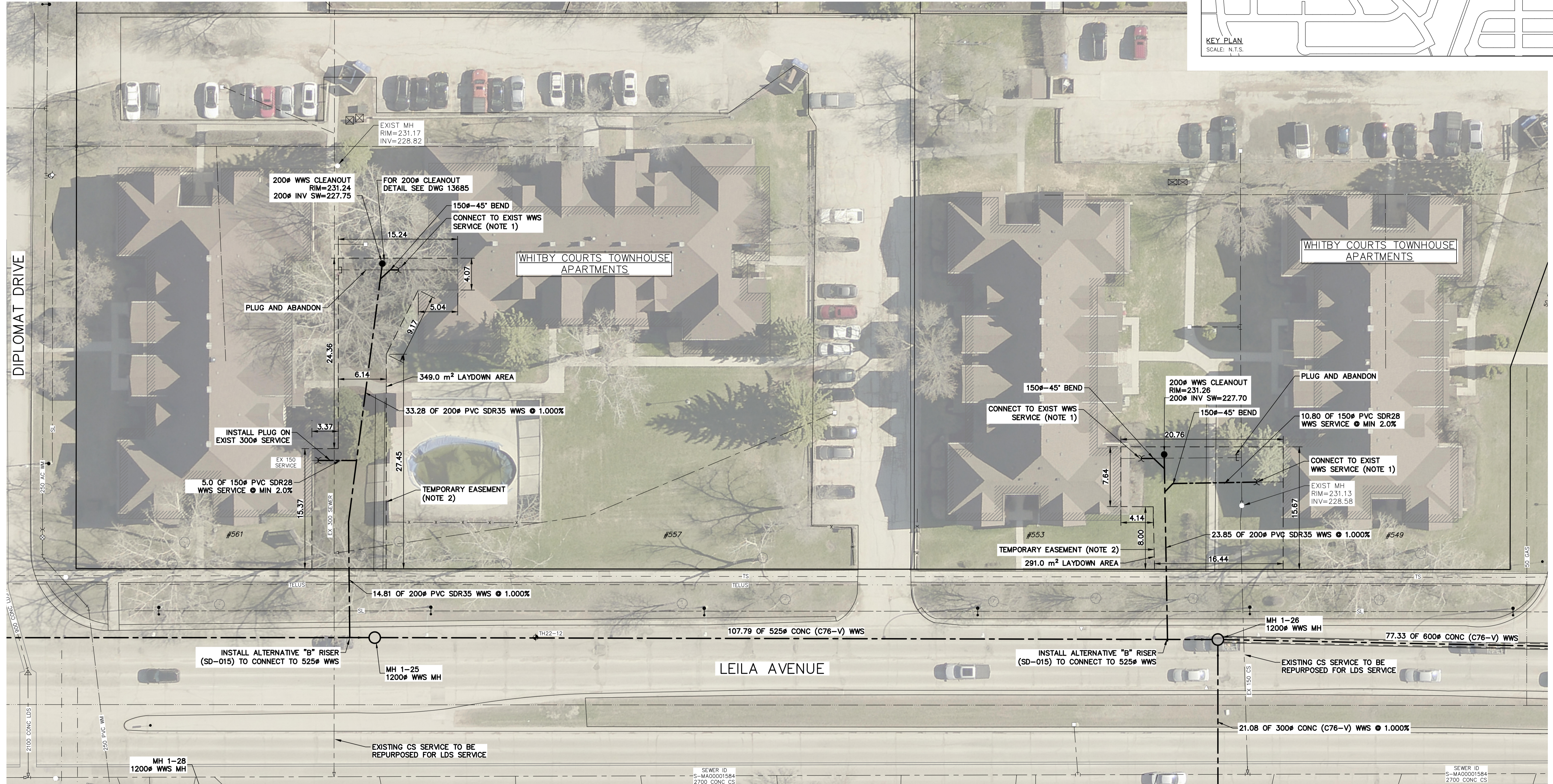
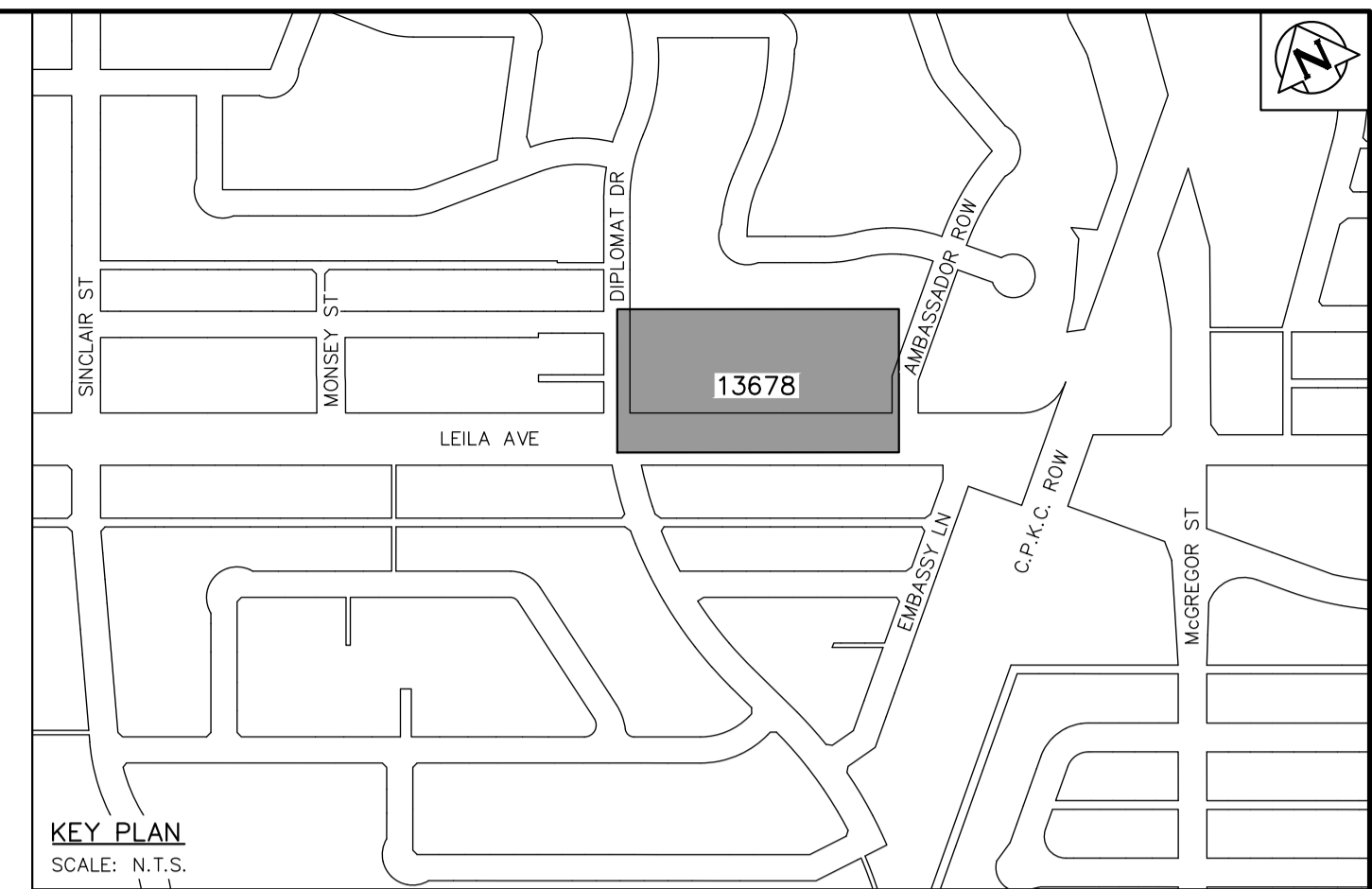
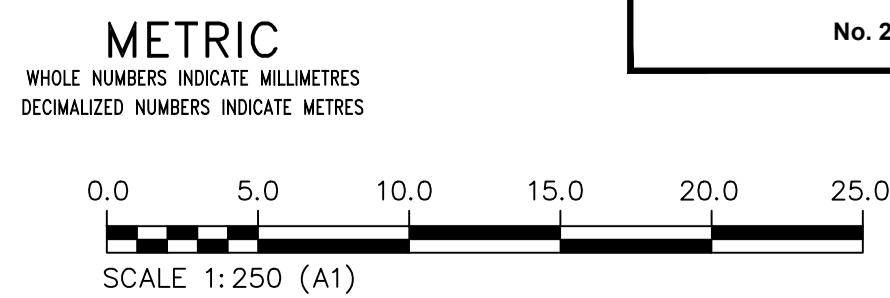


NOTES:

1. PRIOR TO RECONNECTION OF EXISTING WWS SERVICES TO THE PROPOSED 200# WWS CONNECTION, CONFIRM EXACT LOCATION AND SIZE OF EXISTING BUILDING SERVICES. IT IS ASSUMED THAT EACH OF THE EXISTING BUILDINGS HAS 150# WWS SERVICE BASED ON THE RECORD DRAWING DATA FOR THE SERVICE CONNECTION EXITING #561 LEILA BUILDING.
2. EASEMENT LINES AS SHOWN ARE THE PRESUMABLE WORK LIMITS BETWEEN BUILDINGS, HOWEVER DEPENDING ON EXACT BUILDING SERVICE LOCATIONS THE ACTUAL EASEMENT MAY VARY.



FOR INDEX PAGE
SEE DWG 13643



WARNING
IF POWER EQUIPMENT OR EXPLOSIVES ARE TO BE USED FOR EXCAVATION ON THIS PROJECT THE CONTRACTOR MUST:
1) NOTIFY THE GAS COMPANY OF THE PROPOSED LOCATION OF EXCAVATION.
2) TAKE PRECAUTION TO AVOID DAMAGE TO GAS COMPANY INSTALLATIONS.
SEE PROVINCIAL REGULATION 210/72 FOR DETAILS

LOCATION APPROVED
UNDERGROUND STRUCTURES
SUPV. U/G STRUCTURES COMMITTEE DATE
NOTE:
LOCATION OF UNDERGROUND STRUCTURES AS SHOWN ARE BASED ON THE BEST INFORMATION AVAILABLE BUT NO GUARANTEE IS GIVEN THAT ALL EXISTING UTILITIES ARE SHOWN OR THAT THE GIVEN LOCATIONS ARE EXACT. CONFIRMATION OF EXISTENCE AND EXACT LOCATION OF ALL SERVICES MUST BE OBTAINED FROM THE INDIVIDUAL UTILITIES BEFORE PROCEEDING WITH CONSTRUCTION.

VERTICAL DATUM: CGVD28 (HT2.0 Geoid)
HORIZONTAL DATUM: NAD83 (June 1990), Zone 14

NO.	ISSUED FOR CONSTRUCTION	DATE (YYYY/MM/DD)	MID	BY
0	ISSUED FOR CONSTRUCTION	2026/03/10	MID	
	REVISIONS	DATE (YYYY/MM/DD)		

KGS GROUP

DESIGNED BY	MID	CHECKED BY	TLE
DRAWN BY	GEL	APPROVED BY	RBO
SCALE:		RELEASED FOR CONSTRUCTION	
HORIZONTAL:	1:250	DUANE BAKER	
VERTICAL:	1:50	DATE	2026/03/12
PLOT DATE:			

ENGINEER'S SEAL
ORIGINAL DRAWING SEALED BY:
M.A. IANKOVA-DEDOVA
2026/03/11
CONSULTANT DRAWING NUMBER
C1-37

THE CITY OF WINNIPEG
WATER AND WASTE DEPARTMENT
ENGINEERING SERVICES DIVISION

ARMSTRONG SEWER RELIEF WORKS
CONTRACT 1
PRIVATE SEWER SEPARATION
WHITBY COURTS TOWNHOUSE APARTMENTS
(#549-561 LEILA AVE)

SHEET **35** OF **46**
CITY DRAWING NUMBER
13678